



Bridging Early Childhood and Mental Health

Community Collaborations to
Build the Social-Emotional
Development of Preschoolers

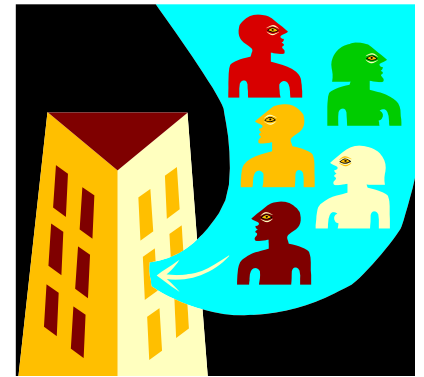
the Consortium
for resilient young children

The Children's
HOME
of Cincinnati



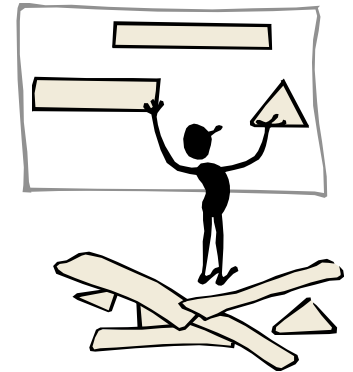
Promoting Resilient Children

- Purpose: To promote social and emotional resilience in children ages birth through 6
 - 8 partner organizations
 - Early childhood providers
 - Behavioral health agencies



Promoting Resilient Children

- Focuses on systems change, specifically integrating early childhood and mental health practices
- Promotes best practices related to quality child care and access to children's mental health services





Who we are...



- The Children's Home of Cincinnati
- Cincinnati Early Learning Centers, Inc.
- Cincinnati Public Schools
- Central Clinic
- Centerpoint Health
- Children, Inc.
- 4C...for Children Resource and Referral
- NorthKey

The Partners



- Promoting Resilient Children (PRC) Program
 - *Fiscal Agent:* The Children's Home of Cincinnati
 - Member Agencies of The Consortium for Resilient Young Children
 - 25-30 early childhood centers in Hamilton County, Cincinnati, Ohio

Why We Came Together

The Issue...

- Campbell (1995) estimated that approximately 10-15% of all typically developing preschool children have chronic mild to moderate levels of behavior problems
- Children who are identified as hard to manage at ages 3 and 4 have a high probability (50:50) of continuing to have difficulties into adolescence (Campbell & Ewing, 1990; Egeland et al., 1990; Fischer, Rolf, Hasazi, & Cummings, 1984).



Why this project?

- The large number of preschool and kindergarten expulsions locally and nationally. (Gilliam, 2004)
- Community attention to the issue: United Way and Success by 6
- Our own experiences with children



Social and Emotional Resilience

- Resilience: The ability to bounce back
- Strength-based approach
- All children can benefit, not just those with challenging behavior



Qualification of our ECMH Consultants

- 2 Leadership Coaches
- 6 Classroom Coaches
- Kindergarten Transition Specialist
- Evaluation Consultant



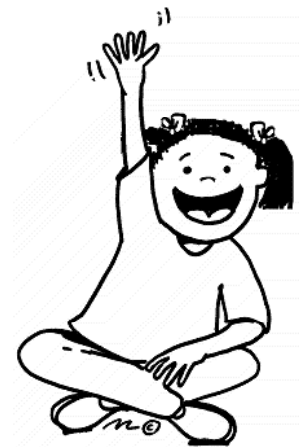
Our ECMH Program Description

- 25 early childhood programs
- 75 classrooms
- 25 demonstration classrooms
- 800 children ages 2-5 years
- 200 children under 2 years



Target Population for PRC

- Children in typical settings
- Children with behavioral issues – in need of therapy or other referral services
- 25-30 Center Directors
- 50 Early Childhood Teachers
- Parents of children entering
- Kindergarten



Our ECMH Program Description

- Program Guidelines from the National Association for the Education of Young Children
- Psychoanalytic Theory (as it applies to attachment and mastery) Hanna Perkins, Cleveland, Ohio
- Devereux Early Childhood Assessment and Strategies
- Program Administration Scale
- Early Childhood Environmental Rating Scale



Our ECMH Program Description

- Observation in classrooms
- Consultations with the Director and Teachers
- Classroom Action Plan development (quarterly)
- Staff Training
- Referrals from center staff and families

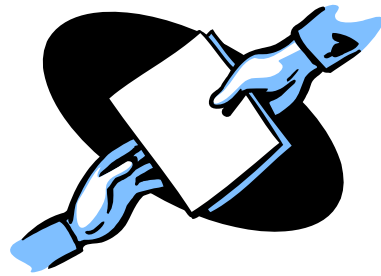




Our ECMH Program Description

○ Methodology

- High Frequency
- Low Intensity
- Long Duration



○ Targets

- Child
- Classroom
- Teacher
- Administrator
- Families



Our Evaluation Measures

- Child: Pre and post DECA (Devereux Early Childhood Assessment tools)
- Directors/ Teachers: Surveys (Efficacy), Focus Groups
- Program Administration Scale
- Action Plans

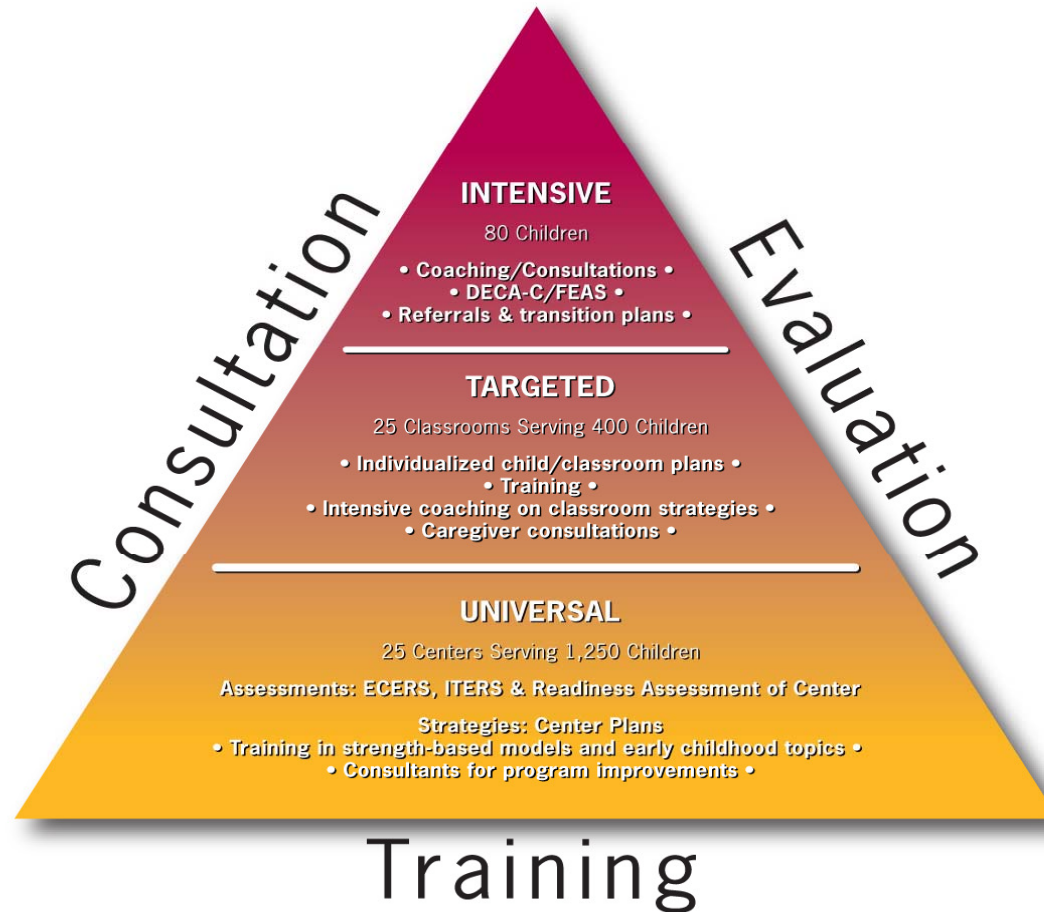


Our Evaluation Strategies for Data Collection

- Choosing the Right Measurement Tool(s)
- Parent Permission
- Quality Assurance



THE LEVELS OF INTERVENTION



Our Management of Evaluation Data

- Tracking systems
- Movement of children – the challenge of transience
- Monitoring Retention
- Encouraging Data Use





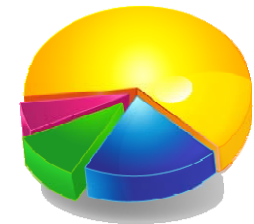
Our Results and Impact

- PRC (n=704)
 - 74% Retention Rate
 - Key Findings:
 - 70% Improved in at least one Protective Factor
 - 48% Significantly Improved on Total Protective Factors Scale
 - 90% in Typical or Strength range at post-test
 - More positive results in Demonstration Classrooms



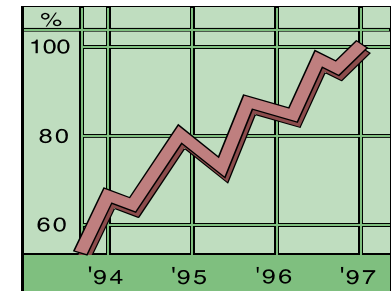
Our Results and Impact

- Key Findings:
 - Centers in PRC for 6 months or less scored 35.7% in the Behavior Concern Range
 - Centers in PRC for 3+ years scored 17.3% in the Concern Range
 - 18.4% difference in centers with long term coaching



Our Results and Impact

- PRC Process Measures
 - Efficacy Survey
 - Director Focus Groups
 - Study of Teacher Turnover and Child Expulsion Rates
 - Year End Review (reporting annual highlights and challenges from centers)



Success Stories

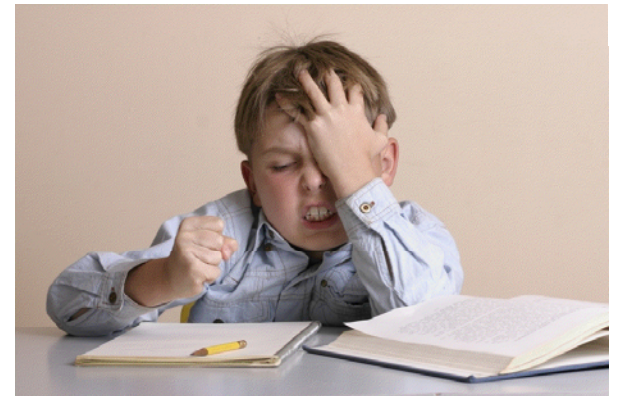


Success Stories



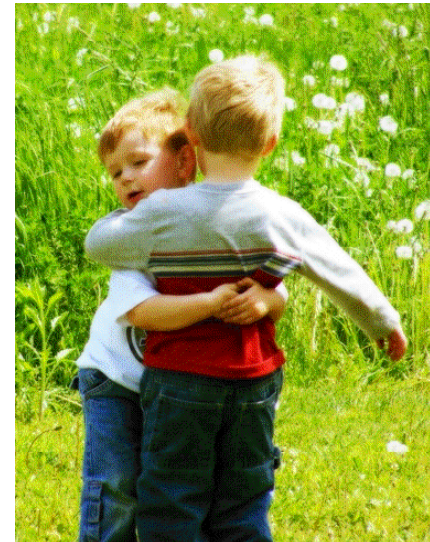
Our Shared Challenges

- Children/families
- Classrooms/teachers/programs
- Partners/collaboration/systems
- Public vs. private schools –
changing the mindset of “mental
health consultation”



Our Lessons Learned

- Relationships are crucial
- Build toward sustainability
- Focus on transition to kindergarten





Our Next Steps



- Family partnerships and resources
 - Clinical services for non-medicaid families
 - Expansion into other counties
 - Infant and toddler services
 - Developing a program model and manual



In Your Community...

- Some possible first steps for collaboration:
 - Partner with your local elementary school around kindergarten transition
 - Find other organizations that may be facing the same issue
 - Look for state or funder-led initiatives around this issue
 - Advocacy activities





Resources

Devereux Early Childhood Program and Assessment
www.devereuxearlychildhood.org

Green, B. et. Al (2006) *Characteristics of Effective Mental Health Consultation in Early Childhood Settings*. NPC Research: Portland, OR.
<http://www.npcresearch.com/Files/Characteristics%20of%20Effective%20Mental%20Health%20Consultation.pdf>

Hepburn, K. et. al. (2007) *Early Childhood Mental Health Consultation: An Evaluation Toolkit*. Georgetown University: Washington D.C.
http://gucchd.georgetown.edu/files/products_publications/TACenter/ecmhc_toolkit.pdf



Contact us
at:

www.resilientchildren.org

the Consortium
for resilient young children

THANK YOU!

